



FITTING INSTRUCTIONS

Product:	Airtec Snorkel	
Vehicle:	MITSUBISHI TRITON MR	
Part No.	011SAT0150S	011SATW0150S

- Before commencing installation read instructions carefully, ensure that the air box configuration is as shown in the images and all listed components are supplied.
- Estimated Fitting Time: 3hrs
- Left hand & right hand components are determined as seated in the vehicle.
- Always place the product on a soft work space to prevent damage prior to installation.
- When removing protective coatings, ensure all new edges are deburred, clean any swarf from the area and apply rust preventative to exposed surfaces.
- To provide adequate sealing of the snorkel system all joints and openings must be sealed using neutral cure silicone. If the vehicle has a one way drain valve do not seal it as water entering through the snorkel head needs to drain. TJM recommend frequent inspections to confirm the air box is not retaining water especially after water crossings.
- The fitment of TJM products does not nullify the OE manufacturer's operating guidelines and/or warnings. Ensure you are familiar with and adhere to the usage instructions specified by the manufacturer in the owner's manual or other official documentation.

Bolt tensions	Dia. (mm)	Nm	ft.lbs	Dia. (inch)	Nm	ft.lbs
All bolt tensions are as follows unless otherwise specified.	5	5	4	1/4"	9	7
	6	9	7	5/16"	22	15
	8	22	16	3/8"	33	27
	10	44	32	7/16"	55	43
	12	77	57	1/2"	86	66
	14	121	90	-	-	-

For product warranty please refer to our website www.tjm.com.au



FITTING INSTRUCTIONS

Product:	Airtec Snorkel	
Vehicle:	MITSUBISHI TRITON MR	
Part No.	011SAT0150S	011SATW0150S

PARTS LIST		
DESCRIPTION	QTY	PART No.
Snorkel Body	1	011MB00150S
Intermediate Tube	1	011IP00150S
Air Ram	1	011AR14B97T
Door Pillar Bracket	1	MM004
Outer Guard Template	1	F-27514-T
Fitting Instructions	1	F-27514
Intermediate tube gasket	1	4050MON03
Adaptor tube gasket set	1	4050MON04
011SATW0150S		
WEDGETAIL(with hose clamp)	1	01AIRWT450

BOLT KIT	
DESCRIPTION	QTY
M8 X 1.25 X 16 Button Head Screw	1
M8 Spring Washer (black)	1
M8 Flat Washer (black)	1
Nylon Plug	2
3/4" x 8g Stainless PK Screw	2
M8 x 1.25 x35 Hex Head Bolt	1
M8 Spring Washer	1
M8 Spring Washer	1
M8 x Ø19mm Flat Washer	1
M8 x 1.25 x 35 S/S Studs	5
M8 Mudguard Washer	5
M8 Hex Head Nyloc Nuts	5

For product warranty please refer to our website www.tjm.com.au



FITTING INSTRUCTIONS

Product:

Airtec Snorkel

Vehicle:

MITSUBISHI TRITON MR

Part No.

011SAT0150S

011SATW0150S



Step 1

1. Disconnect the harness connectors from the air flow sensor and unclip the harness from the air box lid. Then undo the hose clamp and remove the engine intake hose from the air box.



2. Cover the engine intake pipe with a clean plastic bag or similar so no foreign matter can enter the engine.



3. Remove the lid from the air box base and retain.
4. Remove the air filter element from the air box and retain.

For product warranty please refer to our website www.tjm.com.au



FITTING INSTRUCTIONS

Product:

Airtec Snorkel

Vehicle:

MITSUBISHI TRITON MR

Part No.

011SAT0150S

011SATW0150S



5. Remove and retain the fasteners securing the air box base to the vehicle.

6. Remove and retain the air box by lifting up and releasing it from its locating grommets.



7. Remove the air box adaptor tube from the base of the air box by releasing the clips with a flat head screwdriver as shown.



8. Along the sides of the original air box adaptor tube are 2 rectangular covers, one large and one small. Unclip the covers as shown.

For product warranty please refer to our website www.tjm.com.au



FITTING INSTRUCTIONS

Product:

Airtec Snorkel

Vehicle:

MITSUBISHI TRITON MR

Part No.

011SAT0150S

011SATW0150S

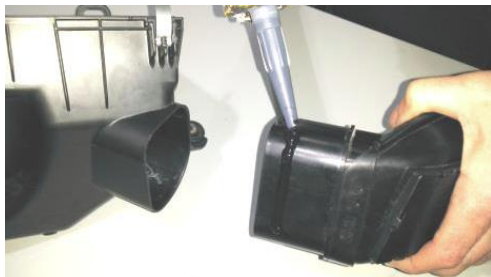


9. Remove the backing from the foam pads supplied and place them in the adaptor tube as shown



10. Once the foam gasket is secured in the recess replace the cover. Repeat for the other side.

Note: Neutral cure silicone may be applied to the edges of the foam gaskets to decrease dust intrusion



11. Run a bead of neutral cure silicone around the end of the original air box adaptor tube that connects to the air box and refit it back into position ensuring it clips securely. Set aside for fitment later.



12. Remove and retain the screws that secure the right hand side mud flap. Remove and retain the mud flap

Note: Turning the wheel full lock to the right will give you more room to work in the wheel arch cavity.

13. Remove and retain the fasteners that secure the rear half of the right hand side plastic inner guard. Remove and retain the plastic inner guard.

14. From under the guard, remove and discard the foam pad as shown.

For product warranty please refer to our website www.tjm.com.au



FITTING INSTRUCTIONS

Product:

Airtec Snorkel

Vehicle:

MITSUBISHI TRITON MR

Part No.

011SAT0150S

011SATW0150S



15. Cut the outer guard template and carefully align with the top and rear outer edges of the right hand guard. Tape it in place.

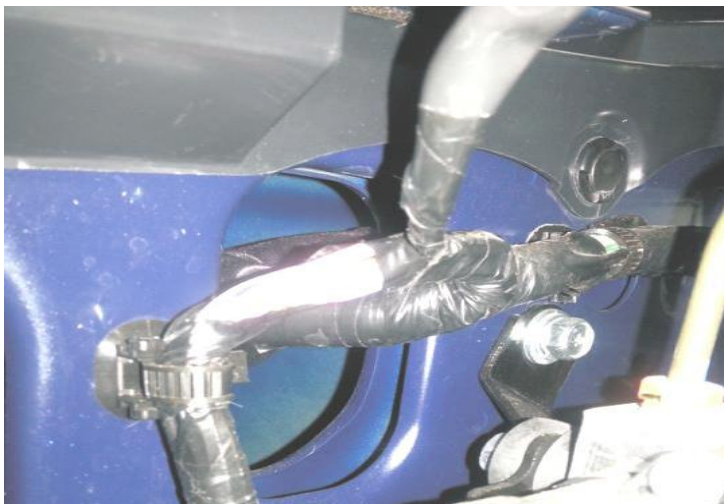
Ensure the template follows the contour of the guard

16. Centre- punch the 14mm hole positions (5) and the 98mm position(1)



17. Drill 3mm pilot holes at all center-punched positions

18. Drill the stud pilot holes to 14mm, then drill the snorkel inlet hole to 98mm using a 98mm hole saw.



19. From inside the guard, unclip the wire harness from the vehicle and move it out of the way to ensure clearance when drilling in step 20.

For product warranty please refer to our website www.tjm.com.au



FITTING INSTRUCTIONS

Product:

Airtec Snorkel

Vehicle:

MITSUBISHI TRITON MR

Part No.

011SAT0150S

011SATW0150S



20. Viewing through the 98mm hole in the outer guard you will see a pre-existing oval hole in the inner guard. Using a 10mm drill create a center point from which you can drill a 6mm pilot hole. Then drill a 10mm hole in the second inner guard panel.

21. Deburr all holes from steps 18 and 20. Clean any swarf from the areas and apply rust preventative to exposed surfaces.

22. Reinstall clip removed in step 19.



23. Loctite all studs into snorkel body.

24. Lightly secure the door pillar bracket to the snorkel, using M8 x 1.25 x 16mm (black) button head socket screw (1), M8 spring washer(1) and M8 flat washer(1)

25. Mask the RHS A pillar to prevent damage.



26. Place the intermediate tube foam gasket over the end of the intermediate tube as shown.

For product warranty please refer to our website www.tjm.com.au



FITTING INSTRUCTIONS

Product:

Airtec Snorkel

Vehicle:

MITSUBISHI TRITON MR

Part No.

011SAT0150S

011SATW0150S



27. Place the intermediate tube in position under the guard and secure it with M8 x 1.25 x 35mm hex bolt (1), M8 spring washer (1) and M8 x Ø19mm flat washer (1)



28. Using the snorkel body studs and the intermediate tube as a guide, temporarily place the snorkel in position on the outer guard.

29. Using the door pillar bracket as a template, mark the hole positions on the A pillar.

30. Remove the snorkel body from the vehicle.



31. Centre-punch the holes marked, then drill 3mm pilot holes at the positions, then drill two 8mm holes.

IMPORTANT: When you drill these holes in the A pillar drill a 3mm hole through the outer skin and inner skin, then the 8mm hole through the OUTER SKIN ONLY.

For product warranty please refer to our website www.tjm.com.au



FITTING INSTRUCTIONS

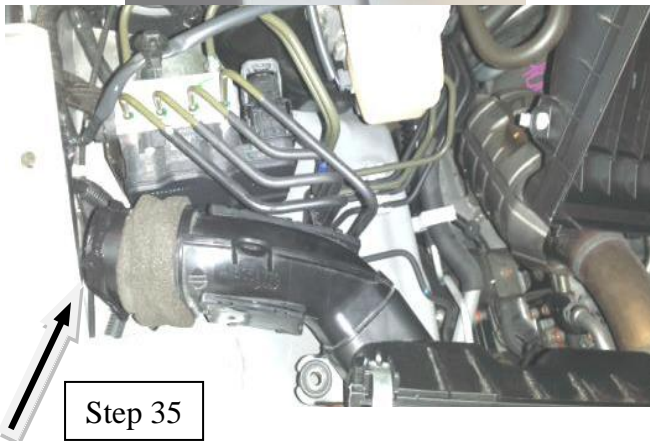
Product:	Airtec Snorkel	
Vehicle:	MITSUBISHI TRITON MR	
Part No.	011SAT0150S	011SATW0150S



32. Remove protective tape from the A pillar. Deburr all holes, clean away any swarf from the area and apply rest preventative to exposed surfaces.

33. Insert the nylon plugs into the 8mm holes.

34. Remove the door pillar bracket from the snorkel body (retaining the fastener) and secure the bracket in place on the A pillar using $\frac{3}{4}$ " x 8g stainless steel PK screws (2)



35. Run a bead of neutral clear silicone around the end of the OE air box adaptor (just below the foam seal)

36. Refit the air box base into position, feeding the foam gasket into the snorkel intermediate tube.



37. Secure the air box base back into the original position using original fasteners.

38. Refit the air filter element and air box lid and secure with clips.

39. Remove the protective bag covering the engine intake hose and reconnect it to the air box.

Ensure the hose clamp is tightened to the correct torque settings.

40. Reconnect the harness connector to the mass air flow sensor.

For product warranty please refer to our website www.tjm.com.au



FITTING INSTRUCTIONS

Product:

Airtec Snorkel

Vehicle:

MITSUBISHI TRITON MR

Part No.

011SAT0150S

011SATW0150S



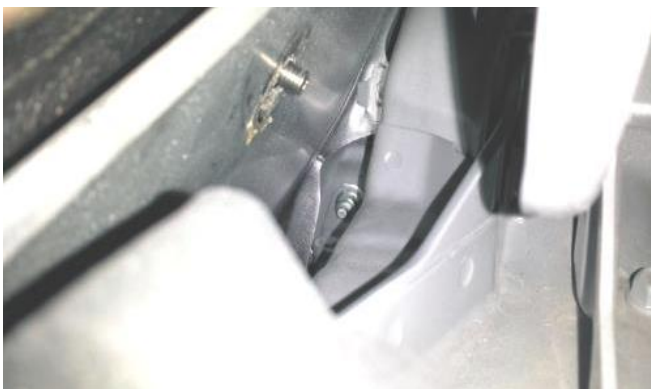
41. Through the 98mm hole in the guard, apply a bead of neutral clear silicone to the inside surface if the intermediate tube at the snorkel end.



42. Fit the snorkel to the guard by locating the short tube section at the bottom of the snorkel inside the intermediate tube.

43. Lightly secure the snorkel to the door pillar bracket using the black M8 x 1.25 x 16mm button head socket screw (1), M8 spring washer (1) and M8 flat washer (1).

Do not tighten. Leave loose for adjustment of snorkel.



44. From inside the guard secure the snorkel to the guard using mudguard washers 5/16 x 1 1/4 x 16 (4) and M8 nyloc nuts (4)

45. From under the bonnet secure the 5th stud using 5/16 x 1 1/4 mudguard washer (1) and M8 nyloc nut (1)

46. Tension the button head socket screw securing the door pillar bracket to the snorkel body

For product warranty please refer to our website www.tjm.com.au



FITTING INSTRUCTIONS

Product:

Airtec Snorkel

Vehicle:

MITSUBISHI TRITON MR

Part No.

011SAT0150S

011SATW0150S



- If you are fitting the standard air ram position the air ram on the snorkel body so the two lower screws securing the mesh are horizontal. Secure with the black hose clamp provided
- If you are fitting the alternative wedgetail position the wedgetail on the snorkel body so it sits parallel to the roof line and the mesh intake is on the inside. See photo.



- **Ensure that all fittings are secure and all fasteners are fully tightened to the appropriate torque settings on page 1.**

47. Refit the right hand side plastic inner guard and mud flap. Secure with the original fasteners.

- **Ensure that as a result of fitting this product no vehicle components are crushed or will chafe.**

For product warranty please refer to our website www.tjm.com.au