



FITTING INSTRUCTIONS

Product:

AIRTEC SNORKEL

Vehicle:

SUZUKI JIMNY 05 / 2018 Onward

Part No.

011SAT0157X

- Before commencing installation of this product – Please read the Fitting instructions carefully, ensure that the Air Box configuration is the same as shown in the images of these instructions.
- Check all listed components are supplied in the kit. Do Not Use this Product as a Hand Hold to enter the Vehicle.
- Left Hand and Right-Hand components are determined as seated in the vehicle looking forward.
- Always place the product on a flat level bench or surface, cover with a soft cloth or blanket to prevent damage to parts prior to installation.
- When removing protective coatings, ensure all new edges are deburred, clean any swarf from the area and apply rust preventative product to exposed painted surfaces where applicable.
- To provide adequate sealing of the snorkel system all joints and openings must be sealed using neutral cure silicone. This vehicle is Fitted with a Single drain Hole – DO NOT SEAL THE HOLES as any potential water entering through the snorkel head needs to drain.
- **IMPORTANT:** - The Drain Hole as fitted to this Vehicle's Air Box Base Must be able to Drain Freely. TJM Recommends frequent inspection to confirm that the Air Box Drain is not retaining water or Blocked - Especially after water crossings. It is common to find water in the base of the Air Box of this model vehicle, particularly when driving during torrential rain and / or inclement weather. **WARNING:** - Failure to Keep the Drain Hole free of Debris may Result in the Vehicle going into "Limp" Mode.
- The fitment of this TJM product does not nullify the OE manufacturer's operating guidelines and / or warnings. Ensure you are familiar with and adhere to the usage instructions specified by the manufacturer in the owner's manual or other official documentation.
- Tools Needed for Installation of this Product: - Metric Socket & Spanner Set, Screwdriver Set, Electric Drill, Metric Drill set, Stepped Drill, Ø 67 Hole Saw, Hammer & Centre punch, Soft Face Hammer, Masking / protective tape, Tube of Black Neutral cure silicone and Loctite or similar product, Rust Preventative product or similar.

For product warranty please refer to our website www.tjm.com.au

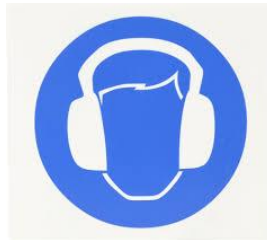


FITTING INSTRUCTIONS

Product:	AIRTEC SNORKEL
Vehicle:	SUZUKI JIMNY 05 / 2018 Onward
Part No.	011SAT0157X

- PPE Including Safety glasses hearing protection and gloves should be used / worn when performing relevant Tasks during this installation.

Personal Protective Equipment Required: -
--



Torque Chart for Bolts

Bolt tensions	Dia. (mm)	Nm	ft.lbs	Dia. (inch)	Nm	ft.lbs
All bolt tensions are as follows unless otherwise specified.	5	5	4	1/4"	9	7
	6	9	7	5/16"	22	15
	8	22	16	3/8"	33	27
	10	44	32	7/16"	55	43
	12	77	57	1/2"	86	66
	14	121	90	-	-	-

PARTS LIST		
DESCRIPTION	QTY	PART No.
Snorkel Body	1	011MB00157X
Intermediate Tube	1	011IP00157X
Door Pillar Bracket	1	F-6593
Outer Guard Template	1	F-27976-T
Fitting Instructions	1	F-27976
Air Ram	1	011AIR0297T
Hose Clamp (Black)	1	HC052B
Hose Clamp	1	HC038
Air Assembly Relocation Plate	1	MM005
Cable Tie 8mm X 360mm	1	CT8360
200mm x 12mm Pinch Weld	1	PW200
Drain Valve – Mini Duck Bill	2	DBV12MM

BOLT KIT	
DESCRIPTION	QTY
8G X 3/4 Stainless PK Screw	2
M8 X 1.25 X 30 S/S Stud	5
M8 Mudguard Washer	5
M8 Nyloc Hex nut	5
M8 x 1.25 x 16 Button Head Screw (black)	1
M8 Spring Washer (black)	1
M8 x 17 Flat Washer (black)	1
Nylon Plugs	2

For product warranty please refer to our website www.tjm.com.au



FITTING INSTRUCTIONS

Product:

AIRTEC SNORKEL

Vehicle:

SUZUKI JIMNY 05 / 2018 Onward

Part No.

011SAT0157X



1. Position the vehicle on a hoist (where possible) for access to the inner guard area. A flat level concrete surface is also suitable if a hoist is not available.

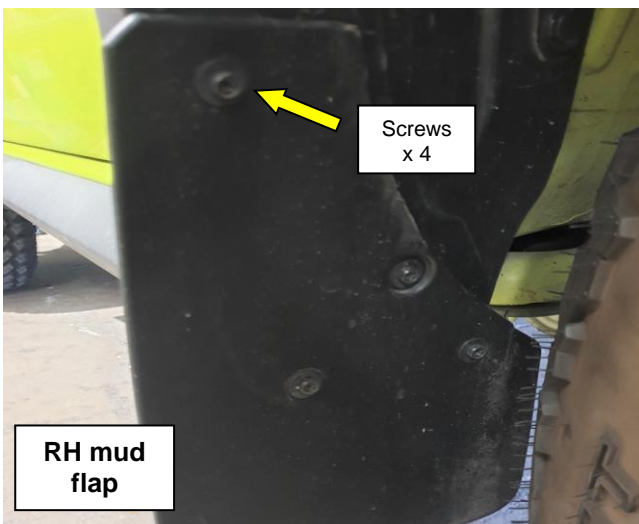
2. Access to the mud flap / wheel arch and inner fender liner will be Required.

Jack up the front of vehicle and remove the right-hand front wheel - **if required** to access the mud flap and inner fender fasteners. Alternatively place the steering on full lock for access to the clips.



3. IMPORTANT: - For the snorkel fitment to this vehicle – O/E parts will need to be removed from the right-hand side on the vehicle.

4. O/E parts will need to be carefully removed from the vehicle and kept / set aside. Parts and fasteners that have been removed are required for re assembly at a later stage, as per these fitting instructions.



5. The right-hand mud flap will need to be removed from the vehicle. There are four screws that retain the mud flap to the vehicle.

Retain all fasteners and parts for reassembly at a later stage.

Note: Turning the steering wheel full lock to the right will give more access to the wheel arch area.

For product warranty please refer to our website www.tjm.com.au



FITTING INSTRUCTIONS

Product:

AIRTEC SNORKEL

Vehicle:

SUZUKI JIMNY 05 / 2018 Onward

Part No.

011SAT0157X



6. To Remove the right-hand wheel arch flare - the side plastic sill cover will need to be unclipped out of the sill panel as shown.
7. Pull the lower leg of the flare clear of the sill cover.



8. With the sill cover unclipped - removing the wheel arch flare: -
The flare is held to the fender with 8 plastic clips & two hex headed screws (located under the bumper).
To disengage the clip squeeze the clip together (access from the inside) and apply gentle pressure on the flare – outward / away from the fender.



9. Removal of the inner fender: - Remove the plastic clips x 10 that retain the plastic inner guard to the vehicle. Retain all fasteners and parts for re assembly.



Note: - There is a single fastener located under the bumper that also retains the fender liner – location indicated with the arrow as Shown.

10. With the clips removed remove the inner fender and set it aside.

For product warranty please refer to our website www.tjm.com.au



FITTING INSTRUCTIONS

Product:

AIRTEC SNORKEL

Vehicle:

SUZUKI JIMNY 05 / 2018 Onward

Part No.

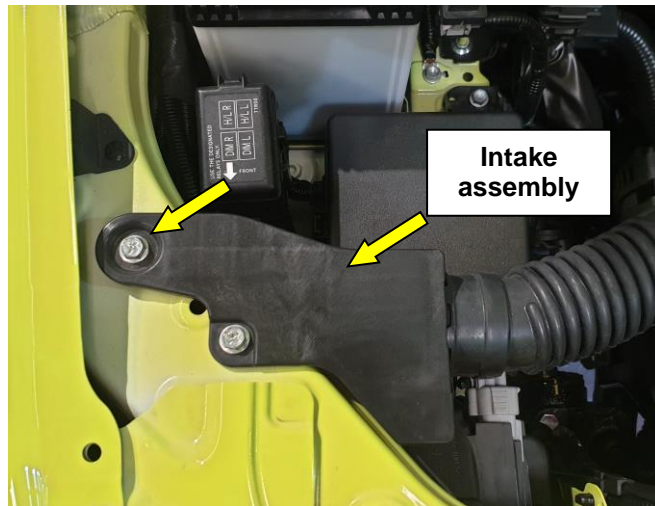
011SAT0157X



11. The turn signal will need to be removed to fit the paper template, to remove the RH turn signal: -

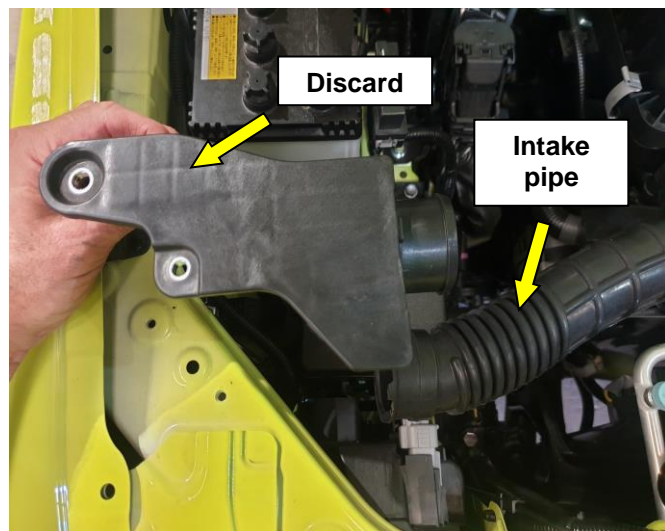
Unclip the wiring harness plug on the turn signal.

Located on the inside of the fender - squeeze in the clip that holds the turn signal to the fender and remove from the vehicle.



12. Remove the two bolts that secure the air intake assembly to the vehicle - located under the bonnet (RH side) as shown.

Retain the bolts for fitting a replacement intake & intermediate tube at a later stage.



13. Disconnect the intake assembly from the engine intake pipe. Discard the intake assembly as it is no longer required.

14. Remove the engine intake pipe from the vehicle and set it aside - As the dia 8 mm O/E holes need to be enlarged / drilled out.

For product warranty please refer to our website www.tjm.com.au



FITTING INSTRUCTIONS

Product:

AIRTEC SNORKEL

Vehicle:

SUZUKI JIMNY 05 / 2018 Onward

Part No.

011SAT0157X



15. With the engine intake pipe - cover the intake area to the engine with a clean plastic bag or similar - so no foreign material can enter the engine whilst the snorkel kit is being fitted to the vehicle.

O/E engine intake pipe with holes shown



16. For engine intake pipe that has **O/E holes only**: - With the engine intake pipe removed from the vehicle, the two holes shown in the underside of the pipe need to be drill out to accommodate the drain valve (Mini duck bill) x 2 - supplied in the fitting kit.

If your intake pipe does not have any drain holes or is not fitted with this type of intake pipe (and has no holes) –

The valve is not required. Proceed directly to step 18



17. Using a stepped drill bit or similar – drill out the existing holes to $\text{Ø}12\text{ mm}$, trial fit the valve – a firm fit is required. Once satisfied with the fitment apply a neutral cure silicon to seal both valves to the pipe.



For product warranty please refer to our website www.tjm.com.au



FITTING INSTRUCTIONS

Product:

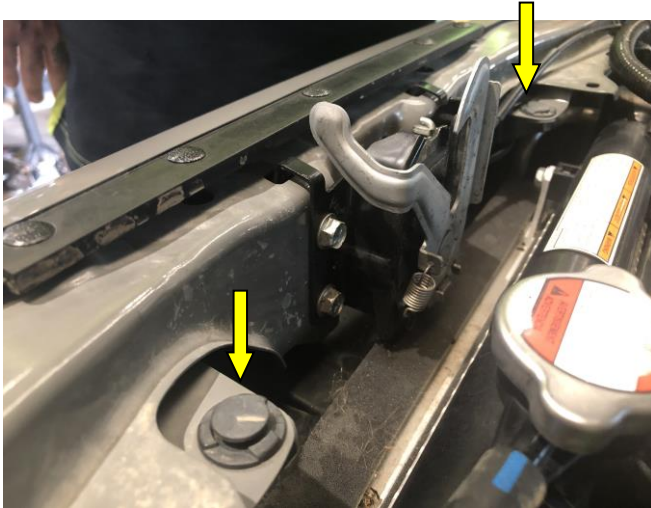
AIRTEC SNORKEL

Vehicle:

SUZUKI JIMNY 05 / 2018 Onward

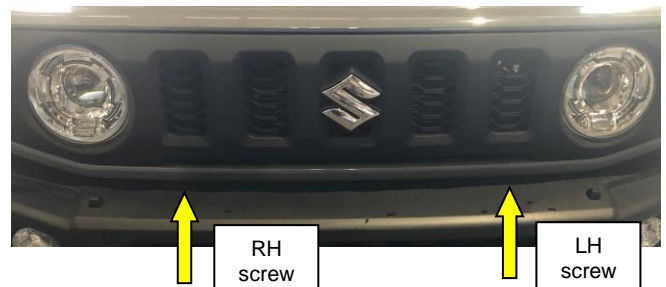
Part No.

011SAT0157X



18. Remove the two plastic plugs that retain the grille to the vehicle as shown.

19. Using a screwdriver turn the two plastic screws ¼ turn to dis – engage, as shown.



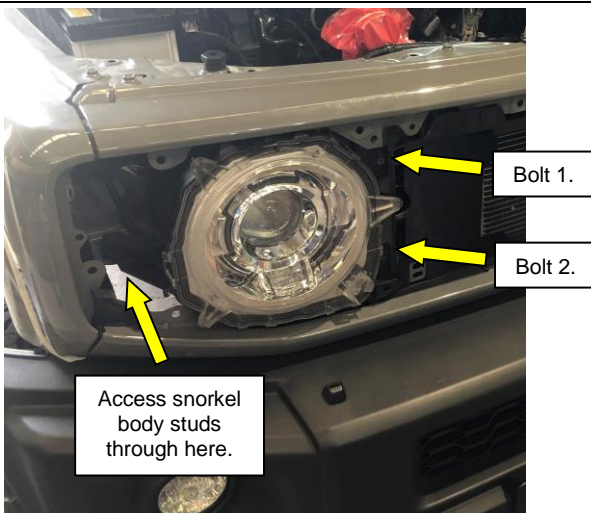
Firmly pull the grille outward.

20. With the upper and lower grille clips released – whilst applying firm pressure pull the grille outward to release the remaining clips as shown.

Un plug the turn signal plug (each side) and remove the grille. Place the grille aside for re fitment later.



Disconnect the turn signal plug on both the RH and LH side of the vehicle.



Bolt 1.

Bolt 2.

Access snorkel body studs through here.

21. To fit the snorkel body to the vehicle the mounting studs must be accessible, with the grille removed access is down beside the right-hand head lamp as shown. If access is too tight to reach the studs - the RH head lamp can be removed if required.

22. **OPTIONAL:** - To remove the head lamp from the vehicle, disconnect the headlamp wiring loom plug, remove the two bolts & clip that retain the headlamp to the vehicle.

For product warranty please refer to our website www.tjm.com.au



FITTING INSTRUCTIONS

Product:

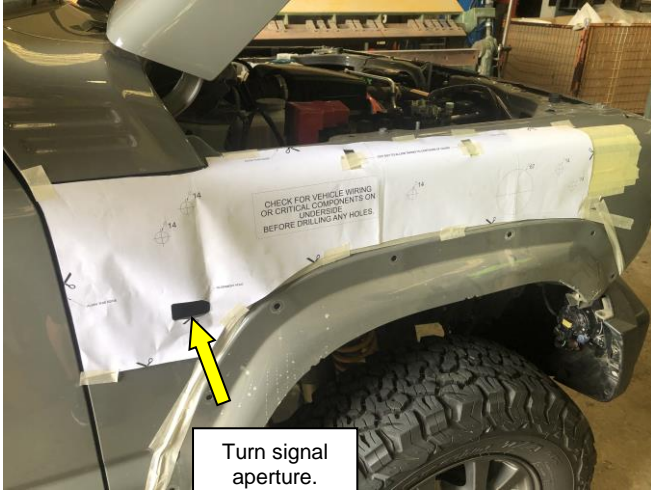
AIRTEC SNORKEL

Vehicle:

SUZUKI JIMNY 05 / 2018 Onward

Part No.

011SAT0157X



23. Apply a protective tape to the fender area where the template is to be applied to the fender. Cut out the paper template and carefully align with the vehicle – **use the turn signal aperture** to ensure correct alignment, tape the template into position as shown.

Important: - Ensure that the template follows the contour of the fender.

Before drilling any holes in the fender - ensure there is no hidden wiring or components that may be damaged.



Drilling pilot holes.

Drilling larger hole to \varnothing 67 mm



24. Lightly center punch all hole center positions. Starting with a \varnothing 3mm drill bit - drill a pilot hole - for all hole positions. drill out the marked (x 5) stud holes - out to \varnothing 14mm.

25. Drill out the last hole to \varnothing 67mm using the hole saw as shown. Remove the template and deburr & remove all sharp edges from the holes. Remove the protective tape and treat all raw / exposed edges with a rust preventative product or similar.



Install the five stainless steel studs into the snorkel body.

26. Remove the studs from the snorkel body & apply loctite to the stud threaded section and screw them back into the snorkel body by hand. Do not allow the loctite to fully dry before fitting to the vehicle.

Note: - Do not screw the studs all the way in – approx. $\frac{1}{2}$ to $\frac{3}{4}$ is ideal.

Using the snorkel body studs as a guide, place the snorkel body in position on the vehicle ensuring it is located inside the intermediate tube. Whilst on the vehicle mark the bracket position on the pillar.

For product warranty please refer to our website www.tjm.com.au



FITTING INSTRUCTIONS

Product:

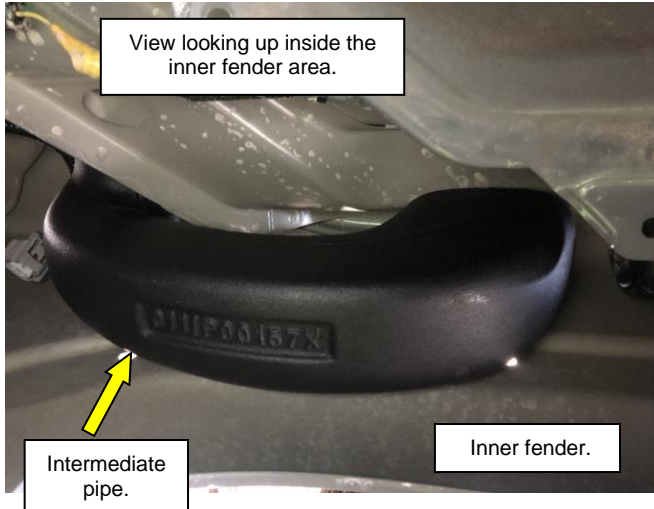
AIRTEC SNORKEL

Vehicle:

SUZUKI JIMNY 05 / 2018 Onward

Part No.

011SAT0157X

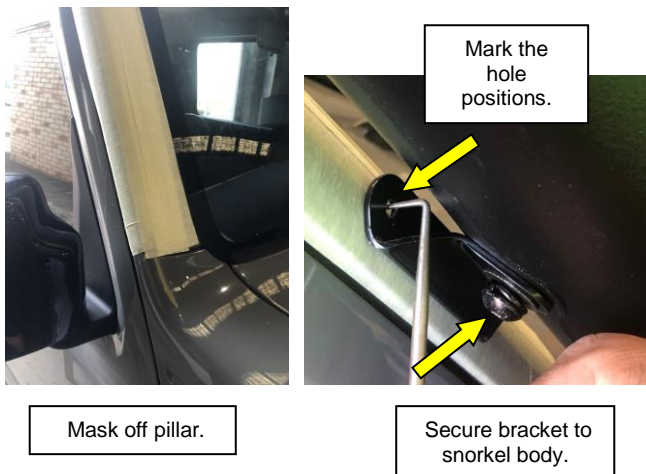


27. Positioning of the "A" pillar bracket :-

To correctly locate the snorkel body on the vehicle the intermediate pipe must be fitted into position. This will determine the position of the bracket on the "A" pillar.

Do not apply silicon to the joints at this stage.

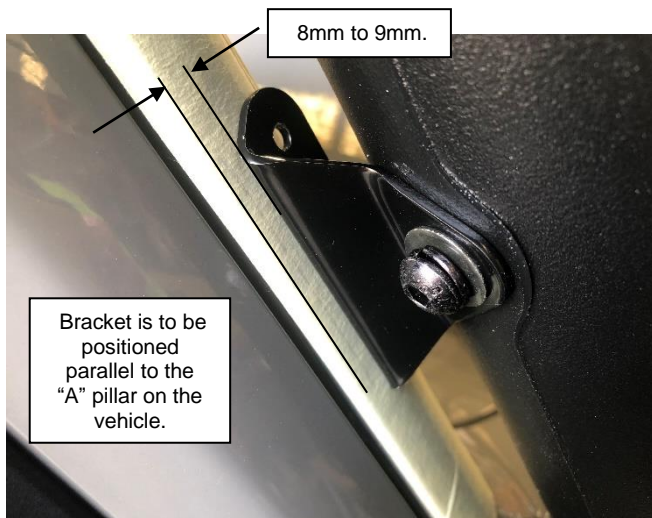
Note: - Once the door pillar bracket is installed, the snorkel and the intermediate tube will be removed from the vehicle.



31. Positioning of the "A" pillar bracket on the vehicle:-

Using a protective tape, mask the RHS "A" pillar as indicated to prevent potential damage.

The "A" pillar bracket should already be fixed to the snorkel body – If not secure the "A" pillar bracket to the top of the snorkel, using the M8 mm stainless button screw, spring washer & M8 flat washer. **Mark the position of the holes.**



32. Remove the "A" pillar bracket from the snorkel. Remove the snorkel body from the vehicle also.

33. Using the bracket as a template mark the position of the two holes on the "A" pillar.

Note: - which way the fold of the bracket is facing – (In this Case **Inward**)

For product warranty please refer to our website www.tjm.com.au



FITTING INSTRUCTIONS

Product:

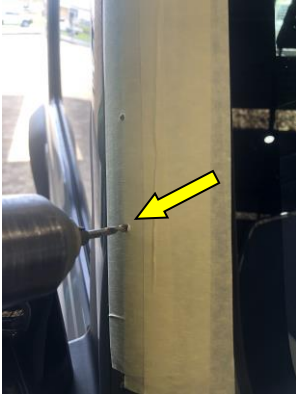
AIRTEC SNORKEL

Vehicle:

SUZUKI JIMNY 05 / 2018 Onward

Part No.

011SAT0157X



Pilot hole.

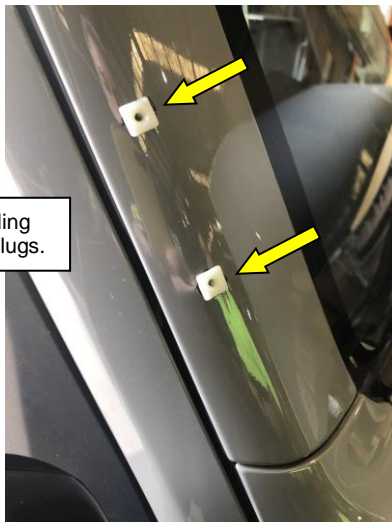


Final size.

34. Lightly center - punch the position of the two marked holes. Using a \varnothing 3mm drill bit - drill a pilot hole.

IMPORTANT: - Drill through the **outer skin only** as some vehicles have air bag wiring etc. located in this area of the pillar.

Drill the two holes out to a final size of \varnothing 8mm, deburr & remove all sharp edges from the holes. Remove the protective tape and treat all raw / exposed edges with a rust preventative product or similar.



Installing nylon plugs.

35. Apply a liberal amount of neutral cure silicon to the holes in the "A" pillar.

Place the nylon plug in the hole, using a soft face hammer gently tap in the plug until fully seated as shown.

Wipe off any excess silicon.



IMPORTANT: - Tighten screws by hand **ONLY** to **7 Nm Max** - No air tools are to be used.

36. Secure the "A" pillar bracket in place on the Vehicle using the 3/4" x 8G stainless steel PK screws Supplied in the fitting Kit.

Do NOT use air tools on these screws to tighten - Torque the two screws to 7 Nm max by hand.

For product warranty please refer to our website www.tjm.com.au



FITTING INSTRUCTIONS

Product:

AIRTEC SNORKEL

Vehicle:

SUZUKI JIMNY 05 / 2018 Onward

Part No.

011SAT0157X



37. Place the hose clamp over the intermediate tube spigot prior to installing the pipe into the vehicle. Position the intermediate pipe between the outer / inner guard as before in **step 25**. The intermediate pipe is now ready to be secured for the final time to the snorkel body.

38. Using a liberal amount of silicon – apply a bead to the inside of the tube.

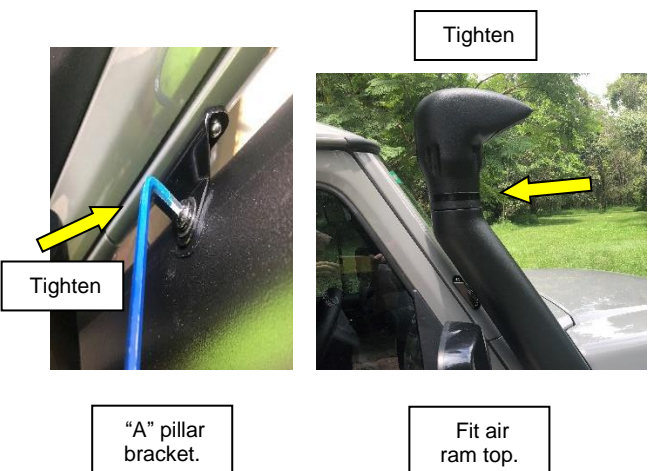
Noting that the snorkel body spigot fits inside.



39. Fitting the snorkel body to the vehicle – ensure / place the hose clamp over the snorkel body spigot before fitting to the internal pipe. Ensure the snorkel body spigot is fully located into the intermediate tube.

40. Lightly secure the snorkel body to the “A” pillar bracket. Do not tighten at this stage.

Leave the bracket loose for adjustment / positioning of the snorkel body to the vehicle.



41. Secure the snorkel body to the vehicle using the M8 nyloc nuts, 5/16" x 1-1/4" flat washers supplied in the fitting Kit. Secure the snorkel body to the intermediate tube using the hose clamp supplied.

Tighten the “A” pillar bolt.

42. Fit the air ram top to the snorkel body ensuring that the screws retaining the mesh are horizontal. Secure with the black hose clamp supplied with the air ram.

For product warranty please refer to our website www.tjm.com.au



FITTING INSTRUCTIONS

Product:

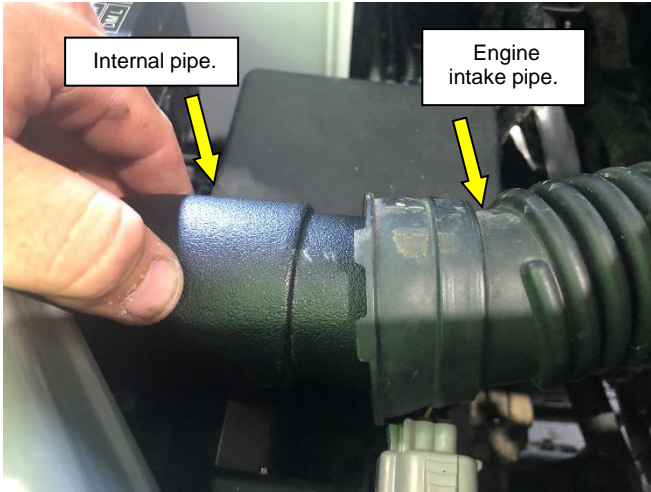
AIRTEC SNORKEL

Vehicle:

SUZUKI JIMNY 05 / 2018 Onward

Part No.

011SAT0157X

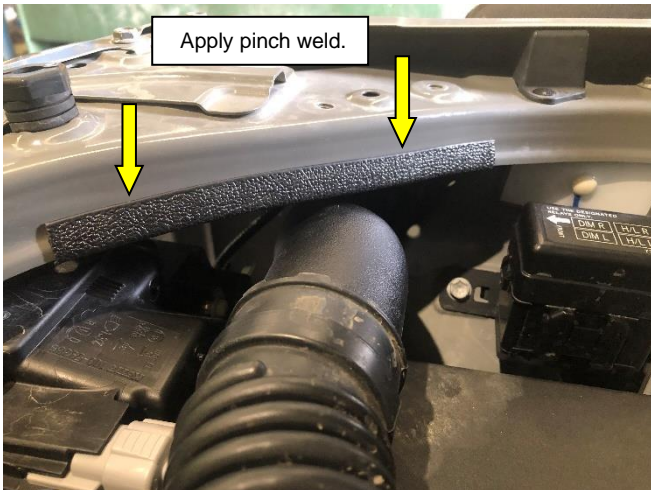


43. Remove the plastic bag that was fitted to the air box (Back in step 15).

44. Re fit the engine Intake pipe to the air box and the new intermediate pipe as shown.

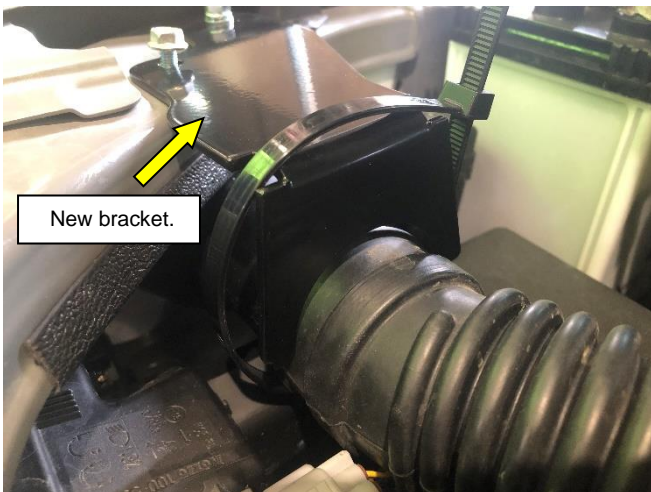
Important: - Ensure the engine pipe is fully engaged into the intermediate tube (There is a groove to retain it).

Also check the engine pipe is as far as it can be fitted to the Air Box.



45. Fit the pinch weld supplied in the fitting kit to the radiator support panel as shown in photo.

Centralize the pinch weld above the intermediate pipe as shown.



46. Using the 2 original bolts retained in step10 - Fit the snorkel intermediate tube retaining bracket (part number MM005) to the same O/E location as the air intake assembly discarded in step 11.

47. Fit the cable tie around the OE air intake pipe & intermediate tube retaining bracket as shown.

For product warranty please refer to our website www.tjm.com.au



FITTING INSTRUCTIONS

Product:

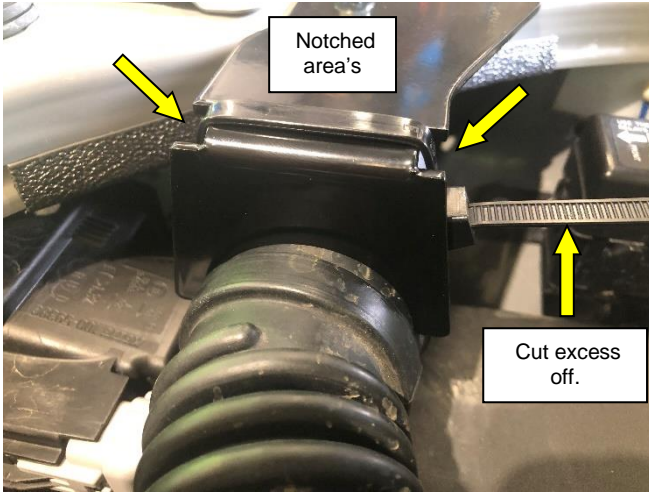
AIRTEC SNORKEL

Vehicle:

SUZUKI JIMNY 05 / 2018 Onward

Part No.

011SAT0157X



48. With the cable tie holding the engine pipe in place - tighten the cable tie firmly and cut off the excess.

Important: - Ensure the cable tie is sitting in the notched area when pulled tight as shown.



49. Refit & re assemble all parts as removed in steps 5 through to 20 of these instructions.

50. Ensure all parts & fittings are secure and that all fasteners have been tightened to the appropriate torque settings as specified on page 2 of these fitting instructions.



51. **IMPORTANT:** - Ensure, when fitting of this product, that no vehicle components or parts can be crushed, chafe or damaged in any way.

52. Check that all snorkel joints are sealed and have had a liberal amount of neutral cure silicon applied.

For product warranty please refer to our website www.tjm.com.au